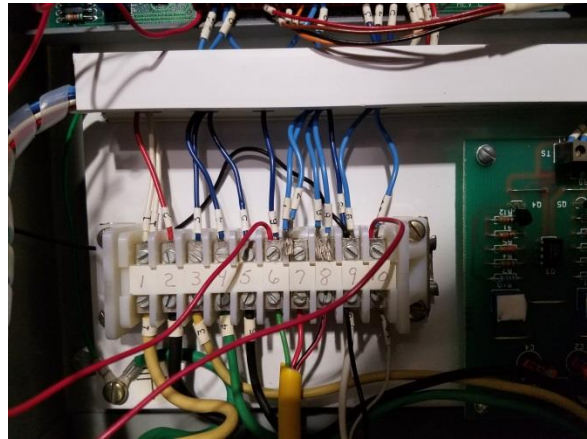
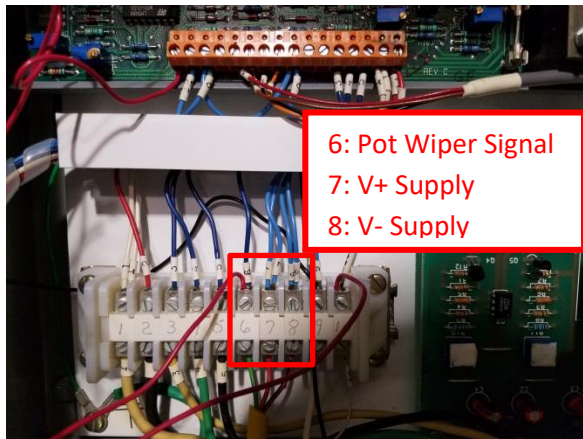


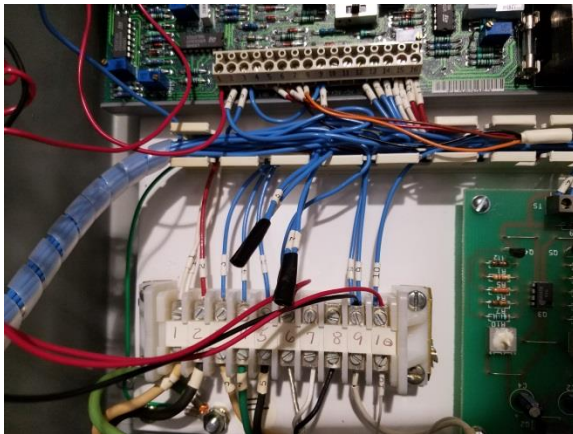
# NickW Hydraulics Lab Circuit Changes

\*\*Reverse steps to get back to previous configuration

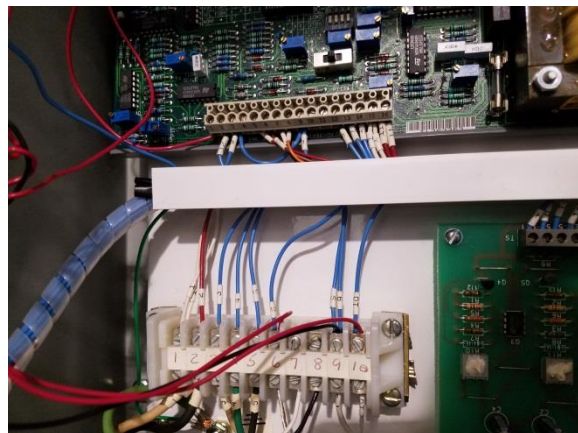
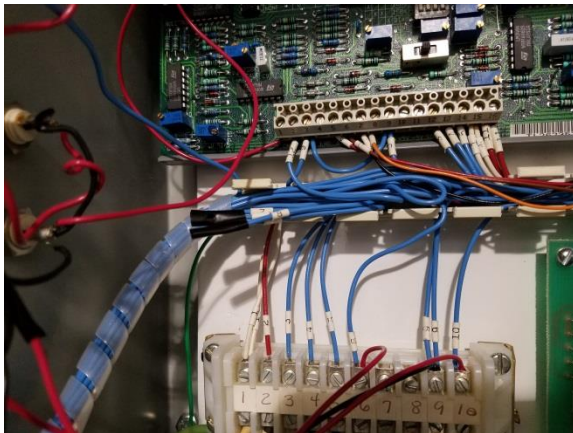
- Unbolt hydraulic cylinder from top of the trainer
- Disconnect stopover  $\pm 1V$  supply from potentiometer (wires 7 and 8)



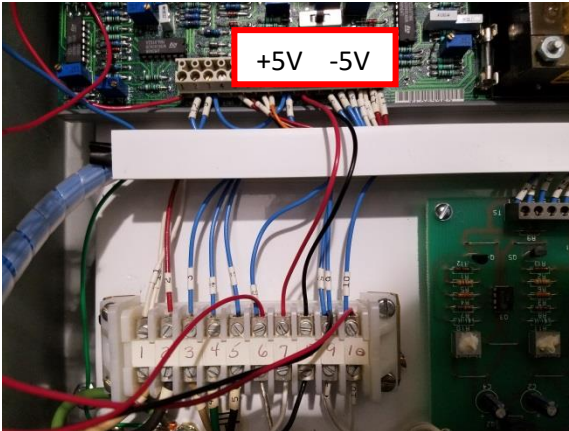
- Tie together remaining wires 7 and 8 to continue supplying  $\pm 1V$  to front panel dial and button



- Pack wires 7 and 8 behind wire cover



- Connect  $\pm 5V$  pulled from main PCB to supply the potentiometers



- Plug the 3-pin, notched, Brad Harrison micro-change connector into the string pot receptacle